

# Bosch Liquid Pressure/Temp combined Sensor, 10 bar & 140 deg C



**Brand:** Bosch Motorsport

**Product Code:** BOS0261230482

**Availability:** 7 Days

**Weight:** 0.08kg

**Dimensions:** 10.00cm x 5.00cm x 5.00cm

**Price: \$148.50**

## Short Description

- Combined Temperature and Pressure sensor. Two sensors in one
- 0 - 10.0 bar (145psi) Pressure Sensor for liquid
- -40 - 140 deg C Temperature sensor for liquid
- Bosch Trapez 4-pin connector
- 45degree cone seat, M10x1 fitting
- Suitable for Diesel, gasoline, water, engine oil, transmission oil

## Specifications



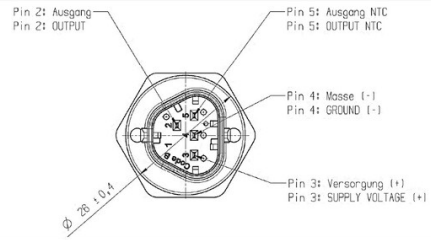
# Liquid Press/Temp combined Sensor

0 261 230 482

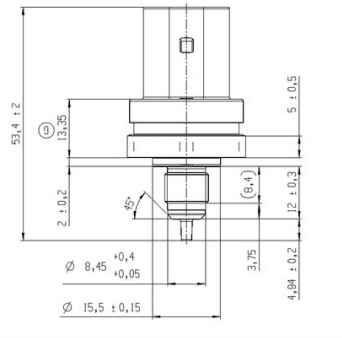


- 0 - 10.0 bar Pressure sensor for liquid
- -40 - 140°C Temperature sensor for liquid
- 45° cone seat, M10x1 fitting
- Bosch Trapez 4-pin connector
- Suitable for diesel, gasoline, water, engine oil, transmission oil

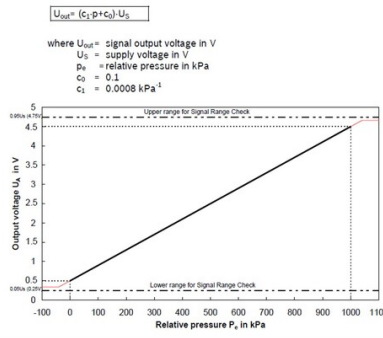
### Pinout



### Dimensions



### Characteristic Data



| Temp. T in °C | Resistance R in Ω | Temp. T in °C | Resistance R in Ω |
|---------------|-------------------|---------------|-------------------|
| -40           | 44864             | 55            | 698.5             |
| -35           | 33676             | 60            | 594               |
| -30           | 25524             | 65            | 507.2             |
| -25           | 19525             | 70            | 434.9             |
| -20           | 15067             | 75            | 374.3             |
| -15           | 11724             | 80            | 323.4             |
| -10           | 9195              | 85            | 280.4             |
| -5            | 7266              | 90            | 244               |
| 0             | 5784              | 95            | 213               |
| 5             | 4636              | 100           | 186.6             |
| 10            | 3740              | 105           | 164               |
| 15            | 3037              | 110           | 144.5             |
| 20            | 2480              | 115           | 127.8             |
| 25            | 2038              | 120           | 113.3             |
| 30            | 1683              | 125           | 100.7             |
| 35            | 1398              | 130           | 89.8              |
| 40            | 1167              | 135           | 80.2              |
| 45            | 978.9             | 140           | 71.9              |
| 50            | 825               |               |                   |

Output characteristic of Temperature sensor

### Installation Notes

Mating Connector : F 02U B00 751-01  
 Installation torque : 37.5 ± 2.5 Nm | Mount with orifice pointing downwards : 0 to ± 45° from vertical | Supply voltage : 5.0 ± 0.25 V

## Product Gallery



